



Public Opinion Survey 2015 Peninsular Malaysia Voter Survey

21st January – 30th January 2015

- 1008 voters aged 21 and above were interviewed via telephone
- The survey respondents are from all states across Peninsular Malaysia
- Voters were selected through random stratified sampling method along the lines of ethnicity, gender, age and parliament constituencies.
- All of the constituencies (12 states and 165 parliament constituencies) were surveyed and the selection of the respondents is proportional with respect to the population in each parliament constituency.
- Respondents were interviewed in their own language of preferences
- Survey margin of error estimated at $\pm 3.09\%$
- The survey was conducted on 21st January – 30th January 2015

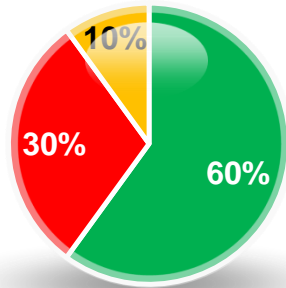
Note: Total percentages presented may or may not add up to 100% due to rounding up of figures.

Methodology

Respondent Profile

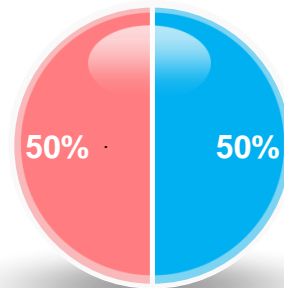
Ethnicity

Malay Chinese Indian

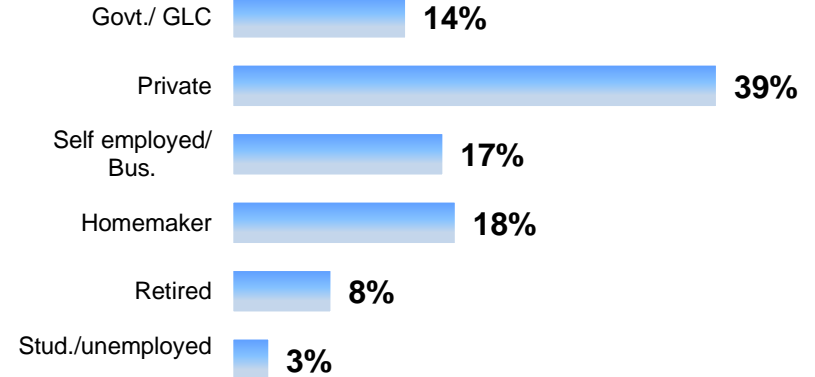


Gender

Male Female

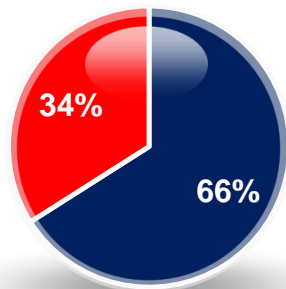


Occupation

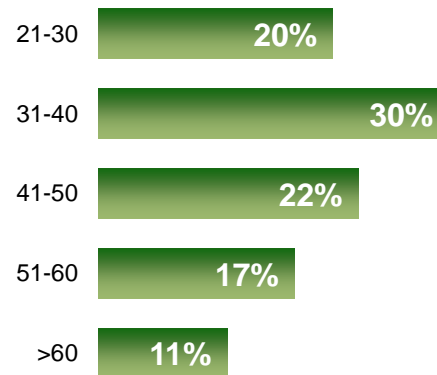


Internet Access

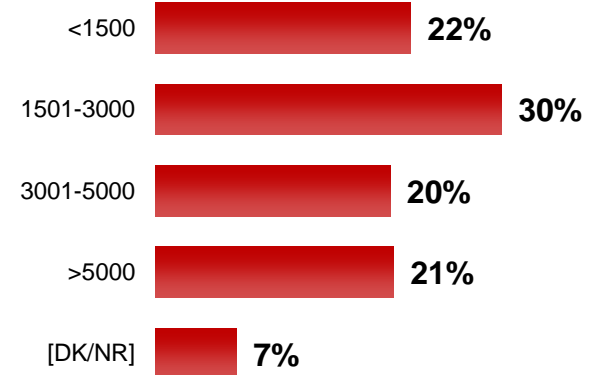
Yes No



Age Group



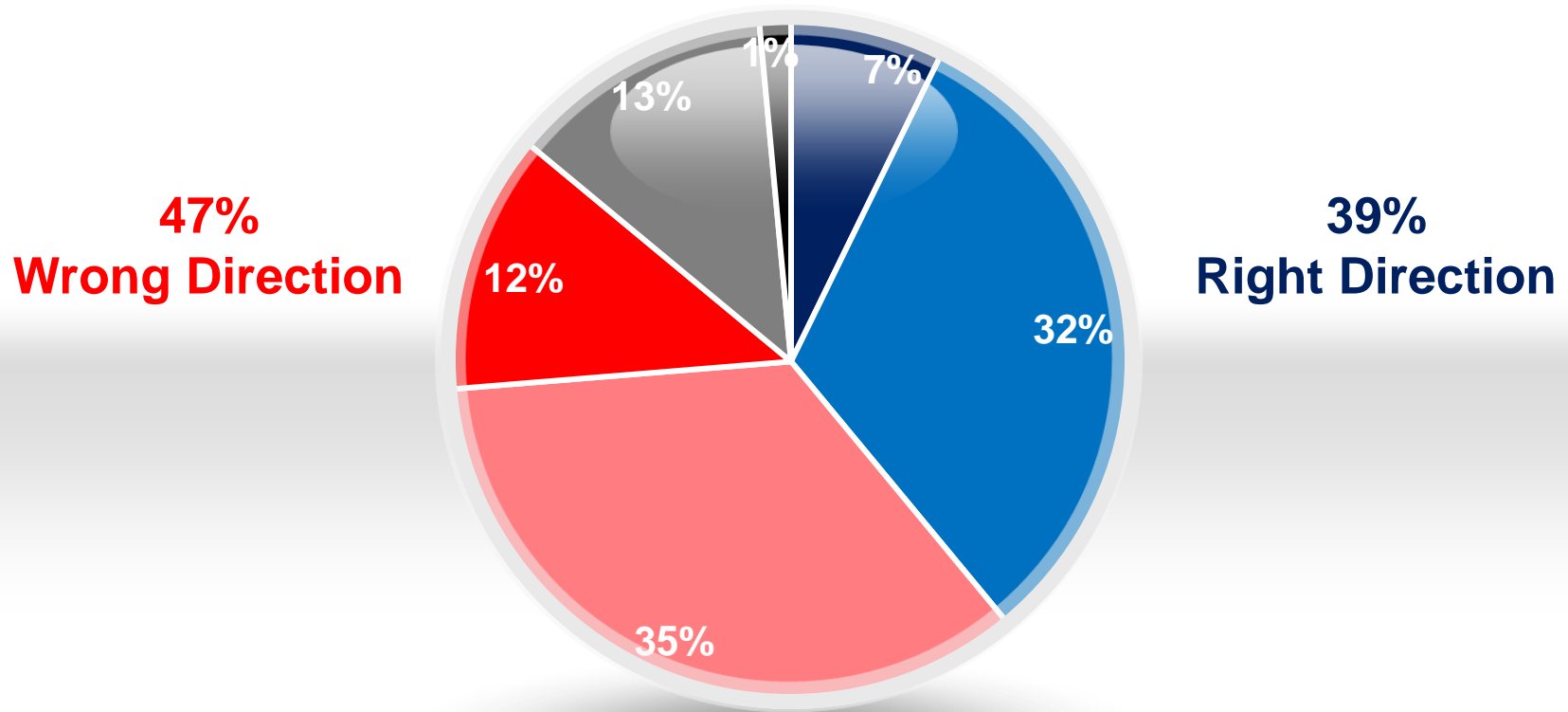
Monthly Household Income (RM)



Note: Govt./ GLC= Government/ statutory bodies (e.g. federal government, MARA, SALCRA)/ GLC (e.g. TNB, Petronas, Telekom, MAS, Maybank); Self-employed/ Bus=Employer / Self employed (e.g. Own small business, own farm, direct sale); Stud./ Unemployed= Student, Unemployed, lost ability to work

Direction of the Country

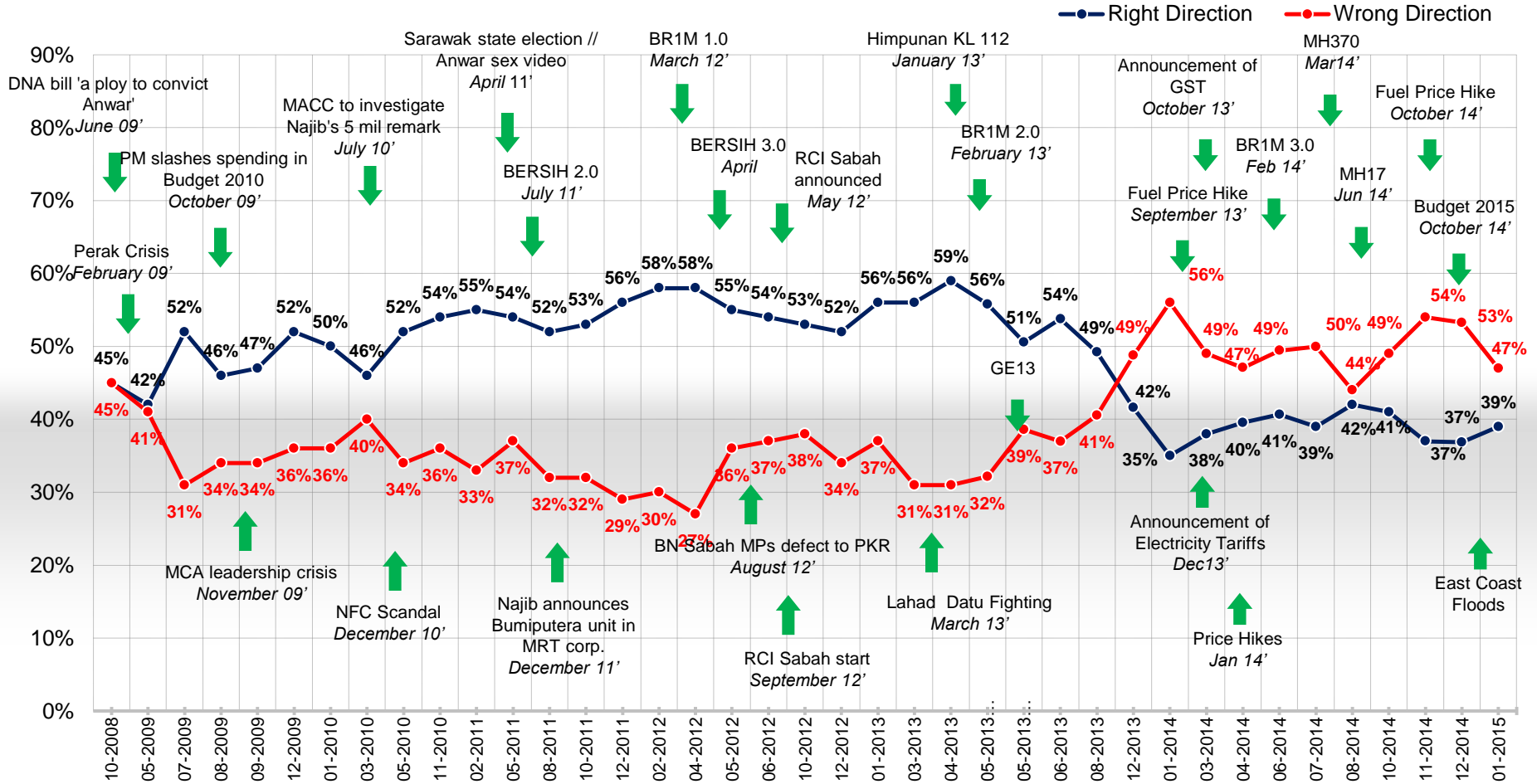
- Strongly to the right direction
- Strongly to the wrong direction
- Unsure
- Somewhat to the right direction
- Somewhat to the wrong direction
- Refused



Q: Do you feel things in this country are going in the right direction, or do you feel things have gotten on the wrong track?

Direction of the Country

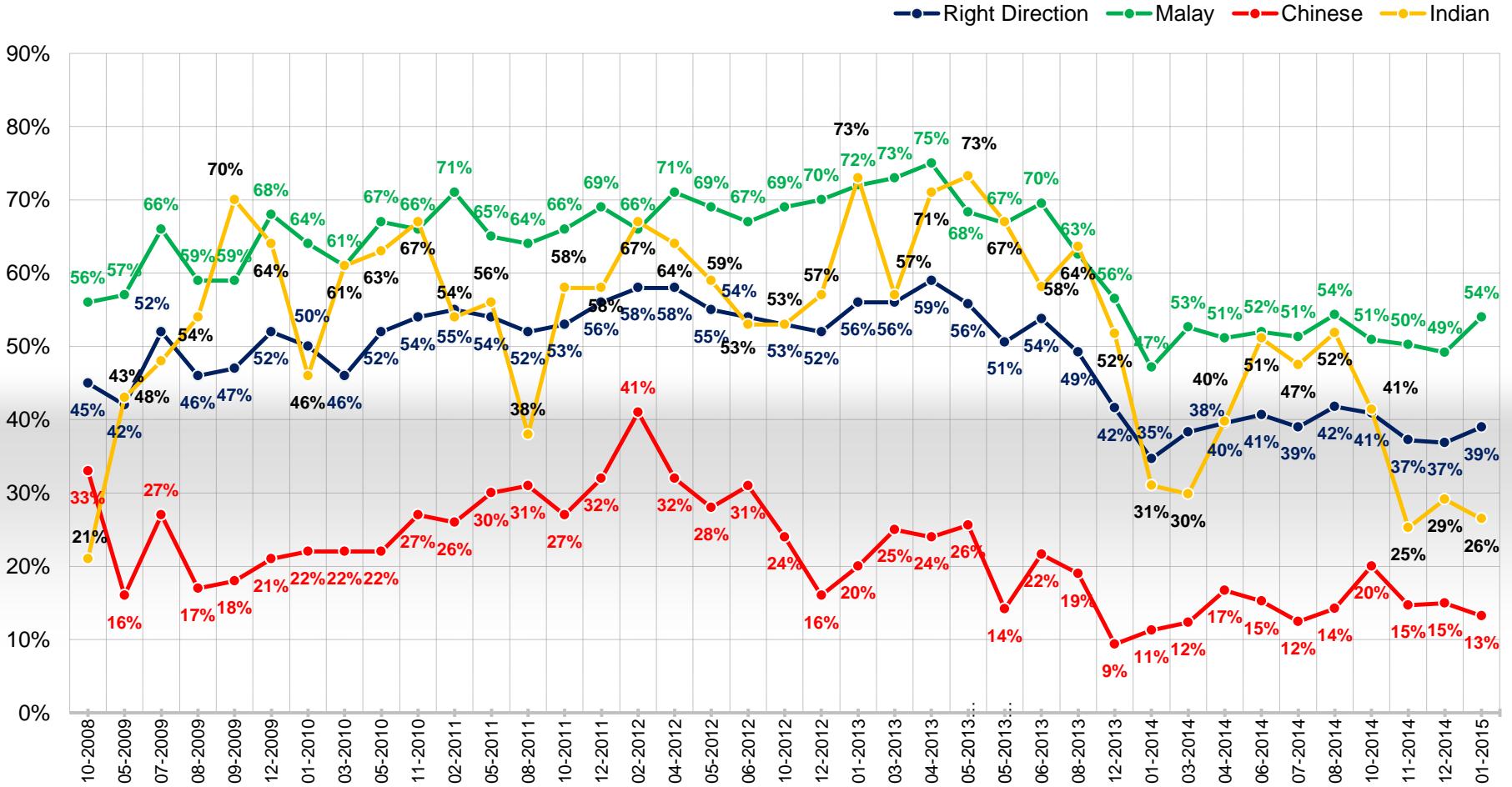
Right versus Wrong direction



Q: Do you feel things in this country are going in the right direction, or do you feel things have gotten on the wrong track?

Direction of the Country

Right direction across Ethnicity



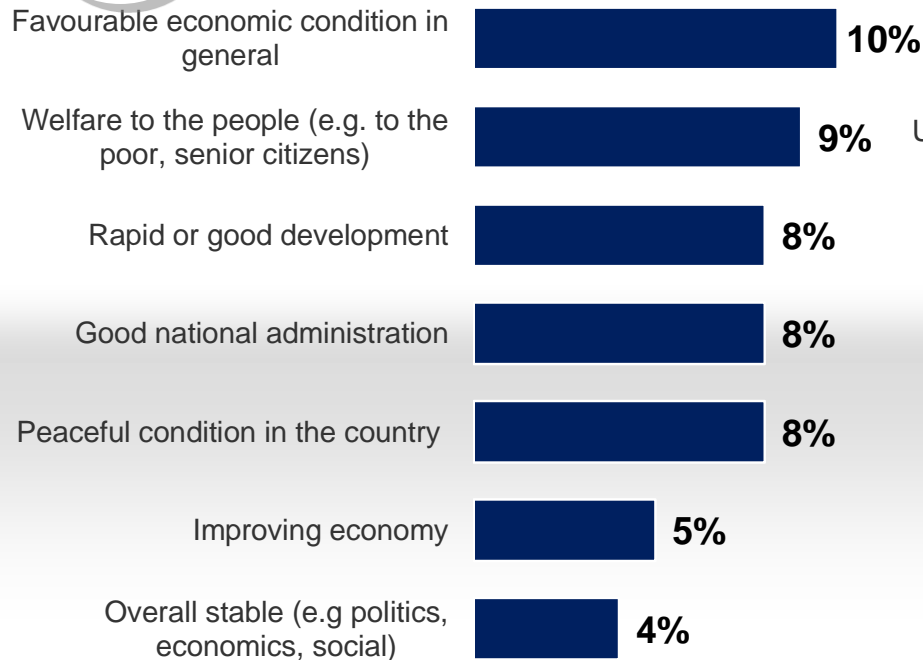
Q: Do you feel things in this country are going in the right direction, or do you feel things have gotten on the wrong track?



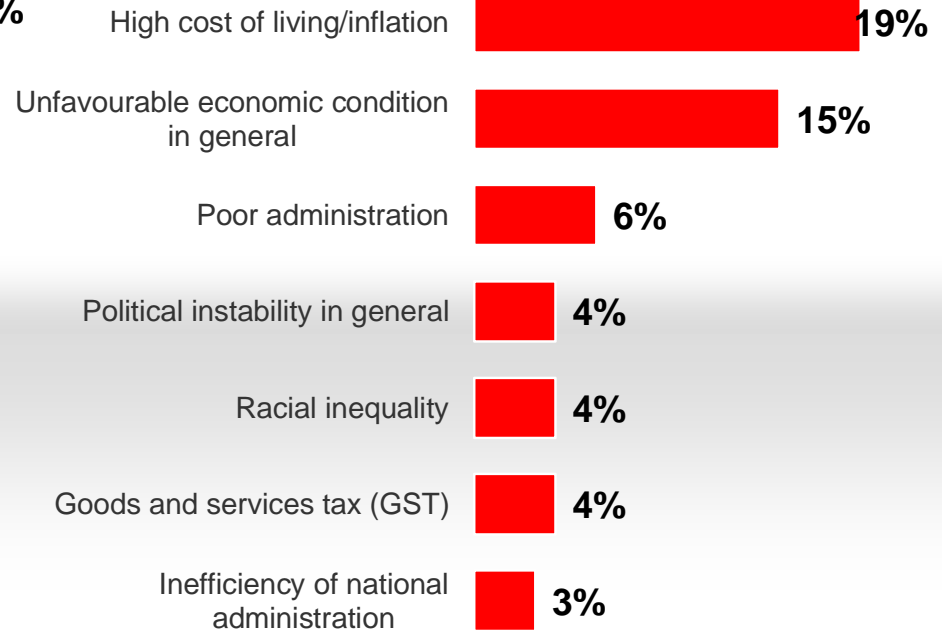
Direction of the Country



39% RIGHT DIRECTION (n=393)



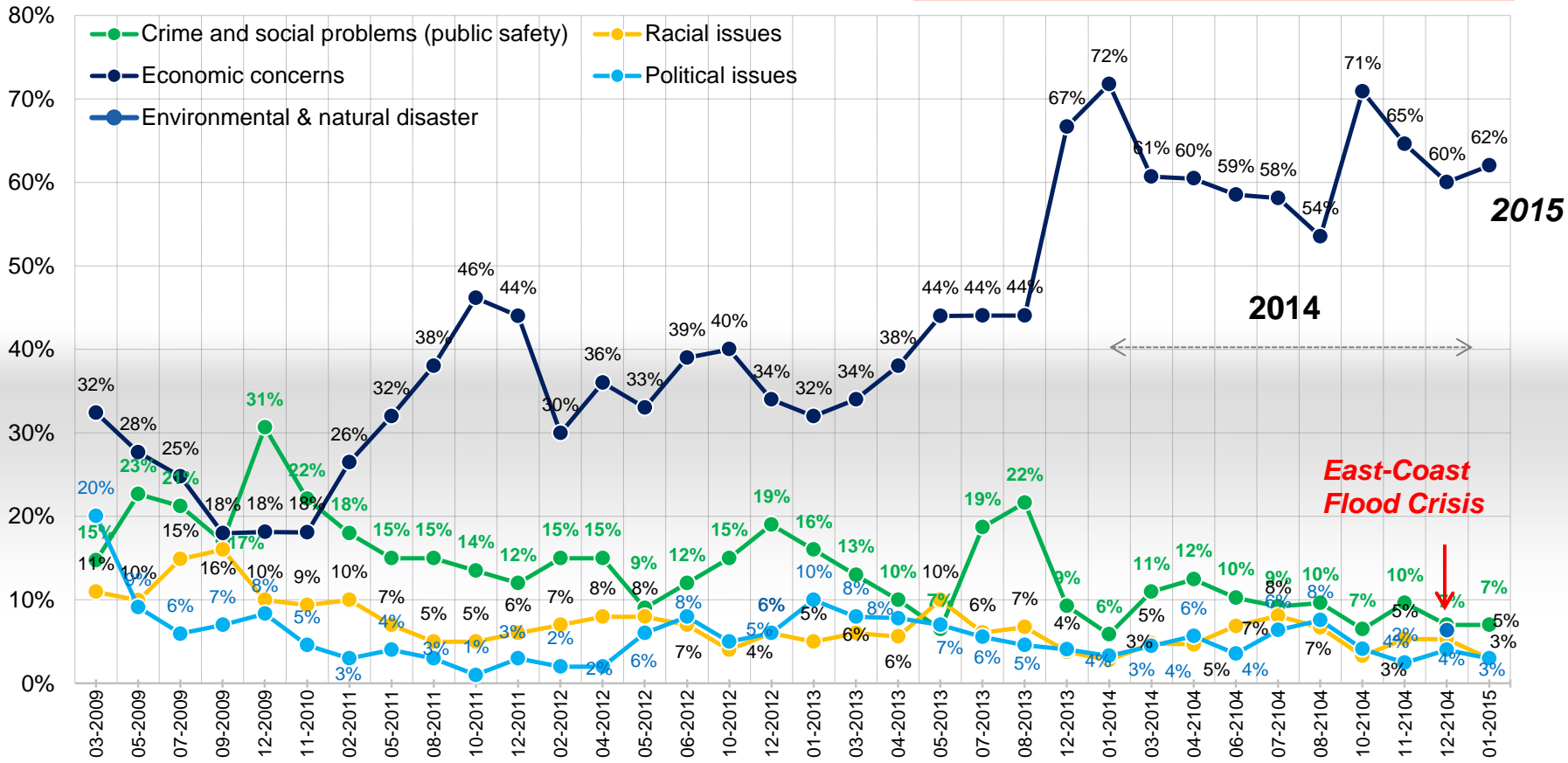
47% WRONG DIRECTION (n=474)



Q: What is the reason for you to say so? (open-ended)

Issues

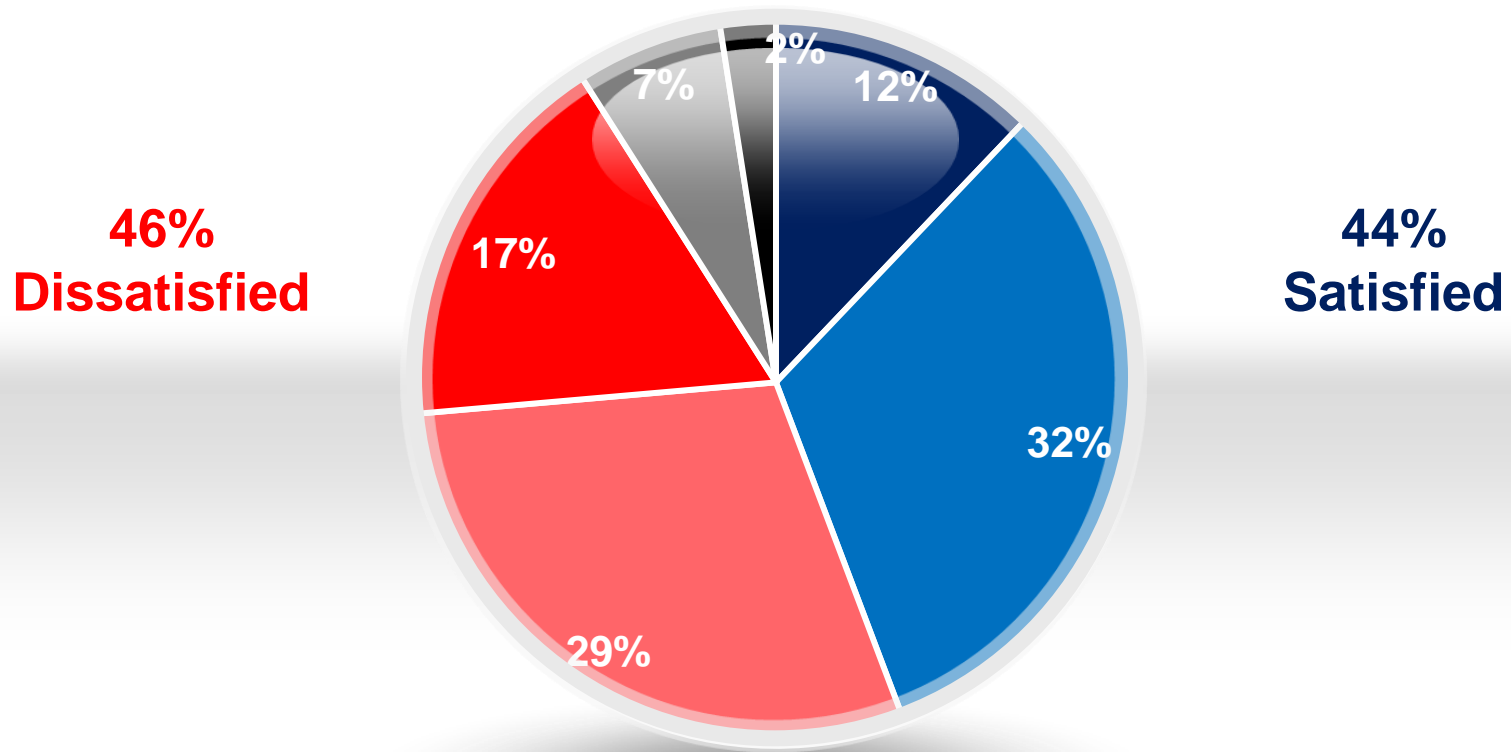
Economic concerns comprise: price hike and petrol prices, cost of living, implementation of GST, lower income, rising of house prices and employment.



Q: Being as specific as you can, what is the number one problem facing people in this country today? (open-ended)

Performance of the Prime Minister

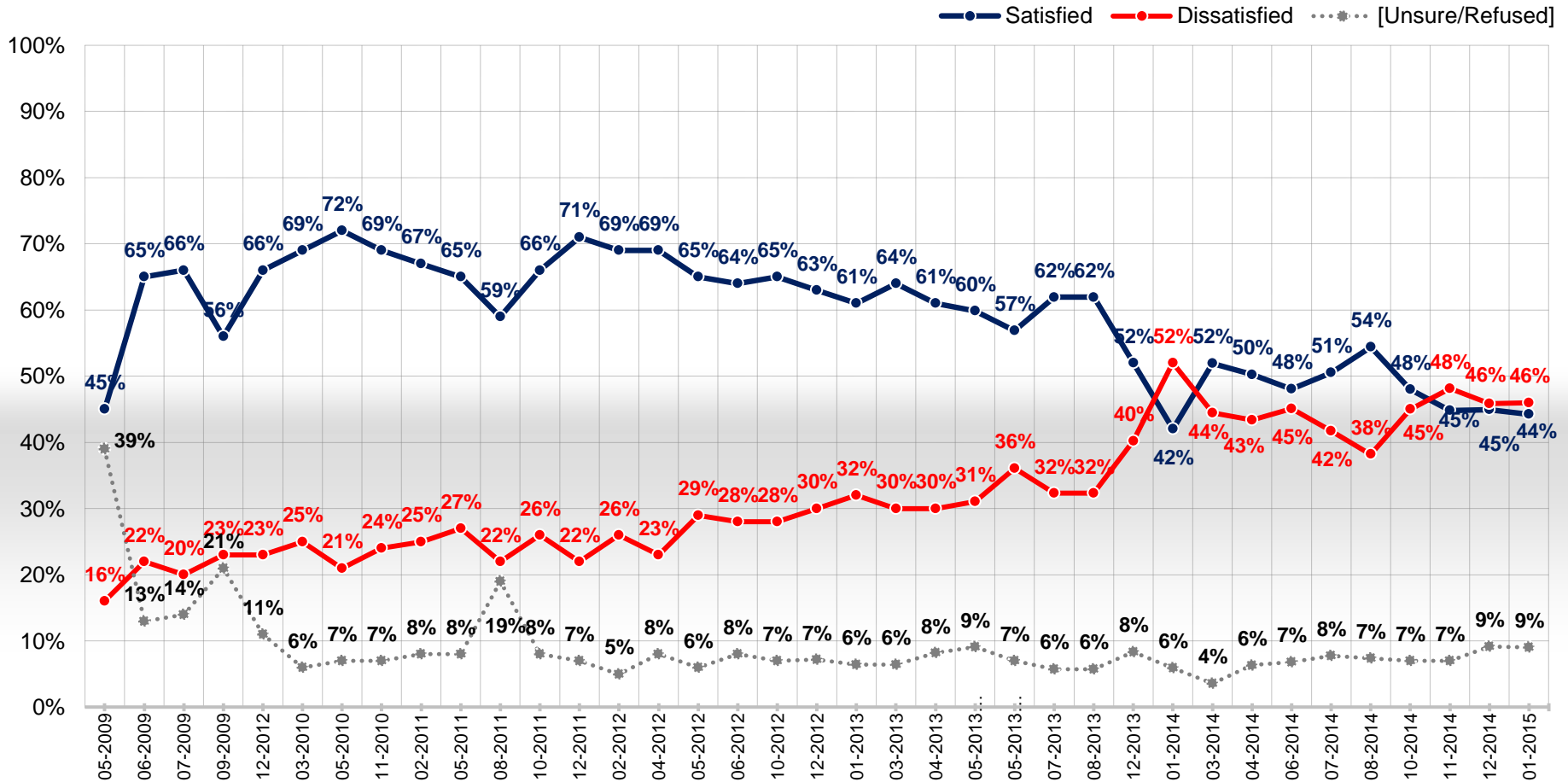
- Very satisfied
- Somewhat satisfied
- Very dissatisfied
- Somewhat dissatisfied
- Unsure
- Refused



Q: How satisfied or dissatisfied are you with the performance of Najib Tun Razak as Prime Minister?

Satisfaction towards PM Najib Razak

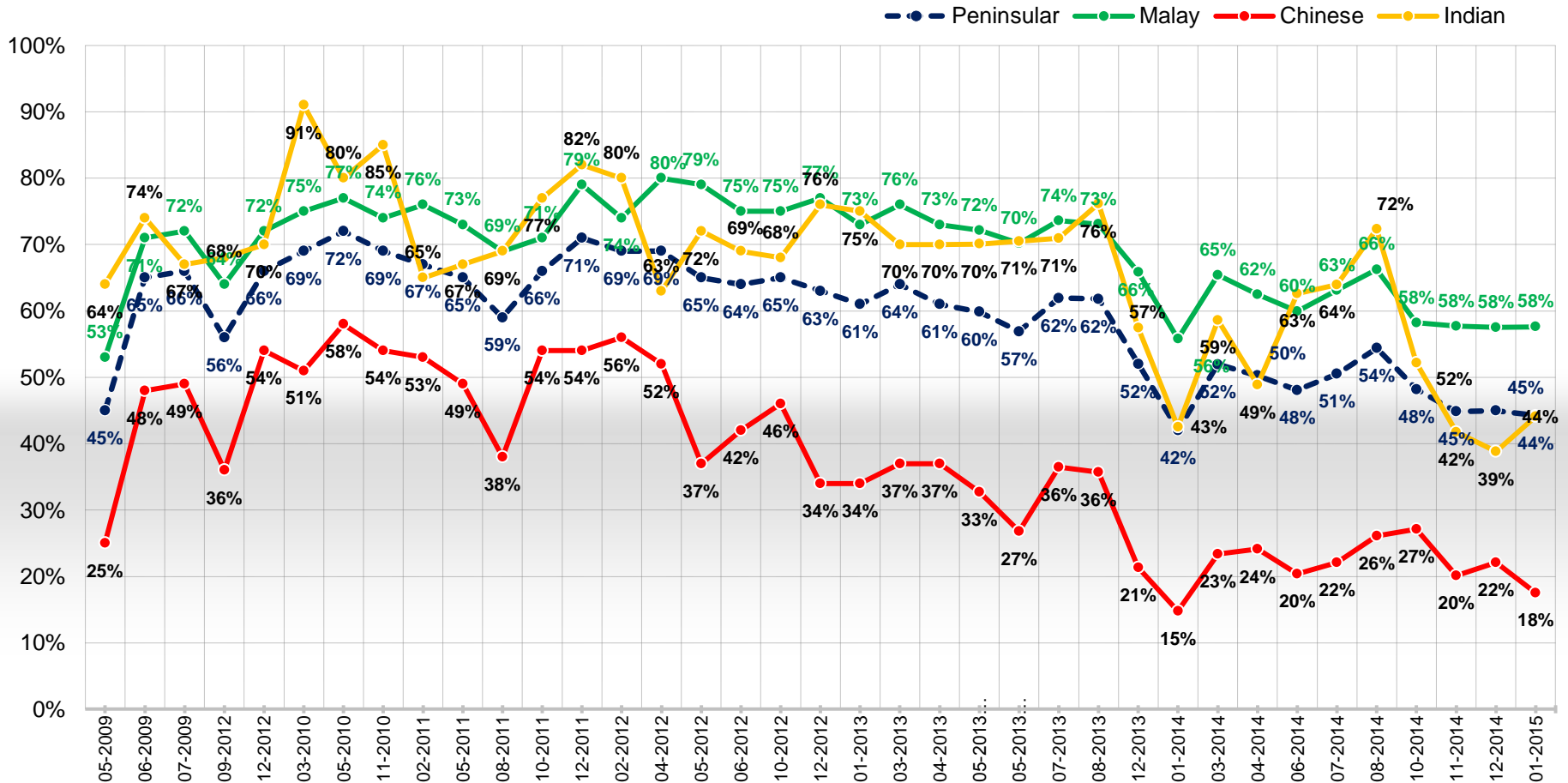
Satisfaction versus Dissatisfaction



Q: How satisfied or dissatisfied are you with the performance of Najib Tun Razak as Prime Minister?

Satisfaction towards PM Najib Razak

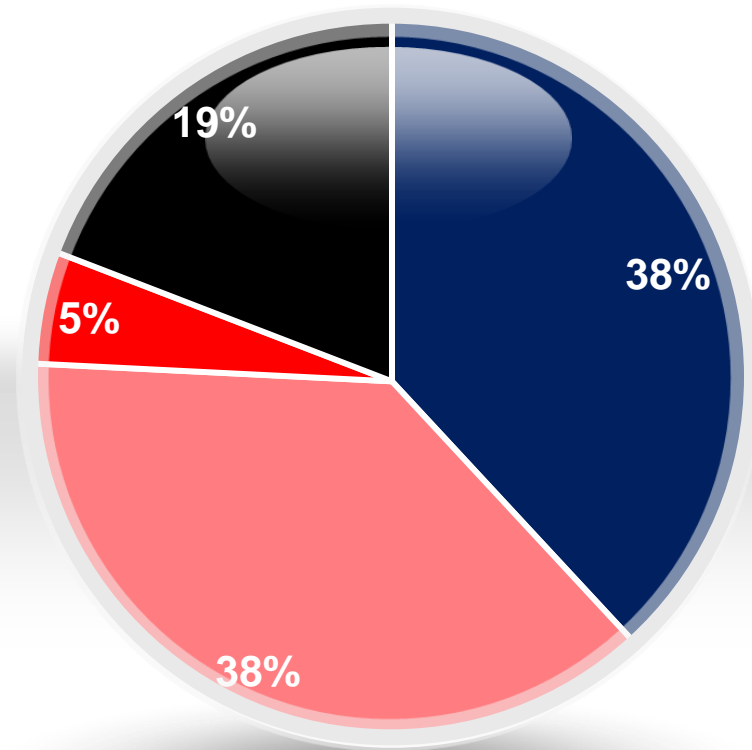
Satisfaction across Ethnicity



Q: How satisfied or dissatisfied are you with the performance of Najib Tun Razak as Prime Minister?

Perception towards Government

- Happy with Government
- Angry with Government
- Dissatisfied with Government
- Unsure/ Refused

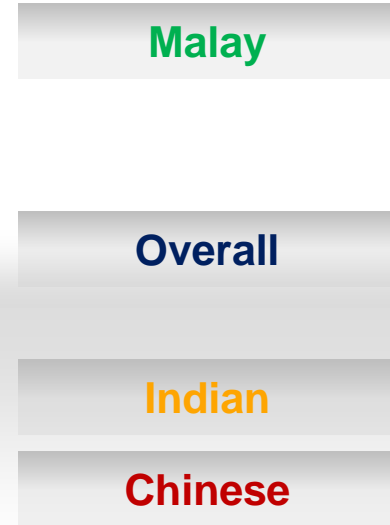
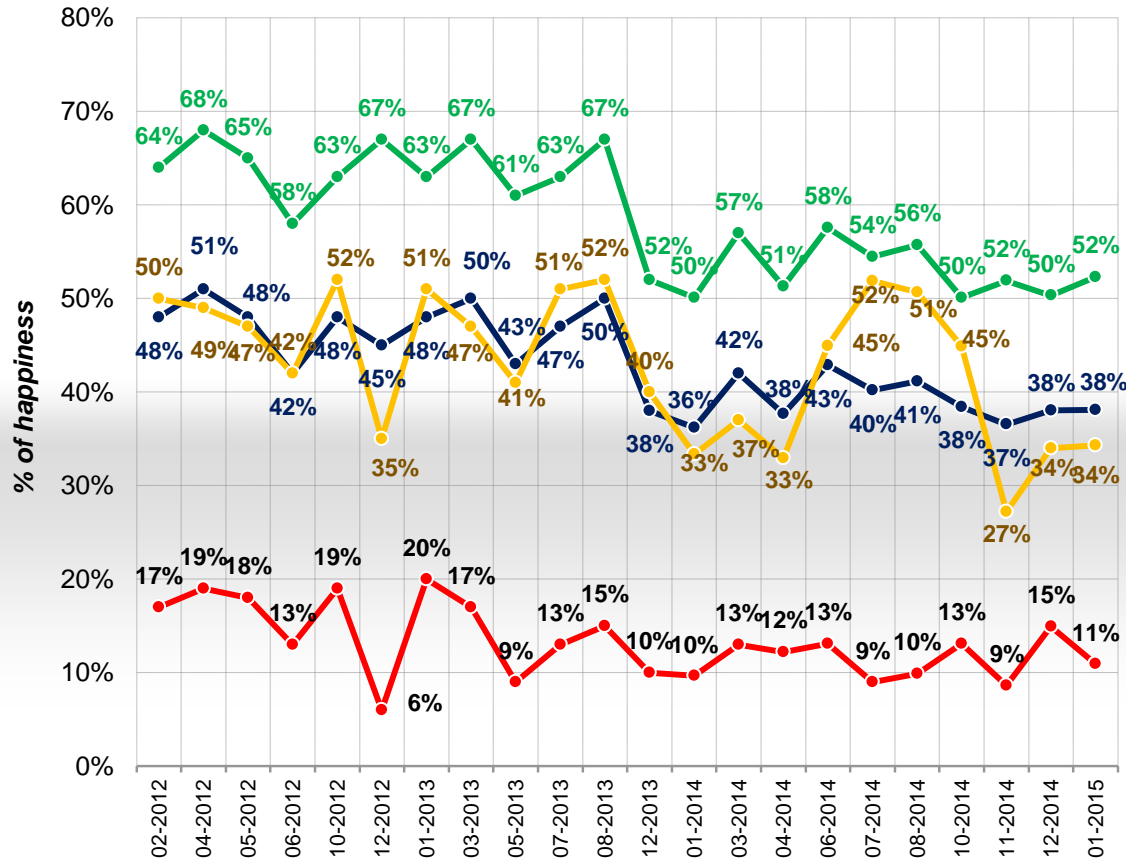


Q: Some people say they are happy with **Government** while others are dissatisfied and others say they are angry?
Which one best describes how you feel?

Perception towards Government

Perception towards Government across Ethnicity

% respondents expressing “happy”



Q: Some people say they are happy with **Government** while others are dissatisfied and others say they are angry?
 Which one best describes how you feel?